

# FAIRY ULTRA HEAT

## Ductless Single Zone Heat Pump

### F E A T U R E S



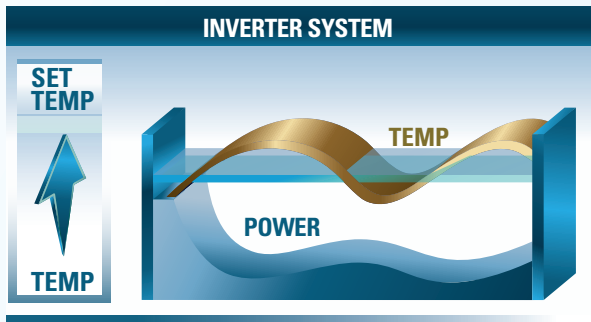
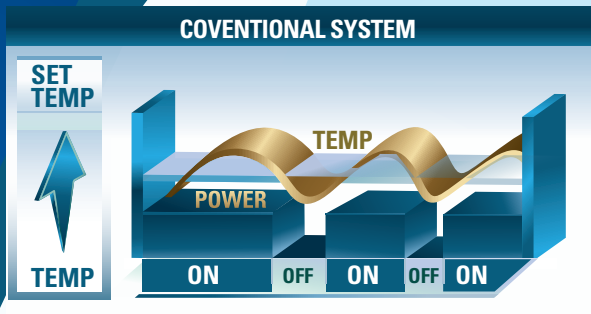
- Cooling, heating, dehumidifying, fan and auto.
- 9000, 12000, 18000, 24000 BTU/hr.
- 230/208V, 60 Hz, 1-phase.
- High wall installation, dual side connection.
- Plastic housing, standard white.
- 7-speed cross-flow fan (auto, turbo, high, medium-high, medium, low and very low).
- Washable filters.
- Variable speed rotary compressor (INVERTER), with overload protection.
- Electronic expansion valve for precise control of refrigerant flow.

- Condenser fins covered with a hydrophilic coating for improved corrosion resistance.
- Large diameter quiet axial-flow fan for more efficient heat exchange.
- Smart pan heater to prevent ice formation.
- Compressor blanket and preheating technology.
- Minimum piping length of 10 ft. (3 m).
- Flared connections.
- Wireless remote included.
- Wired wall controller available.
- Wi-Fi.
- Set temperature: 16 to 30 °C (61 to 86 °F).
- Temperature display format: °C or °F.



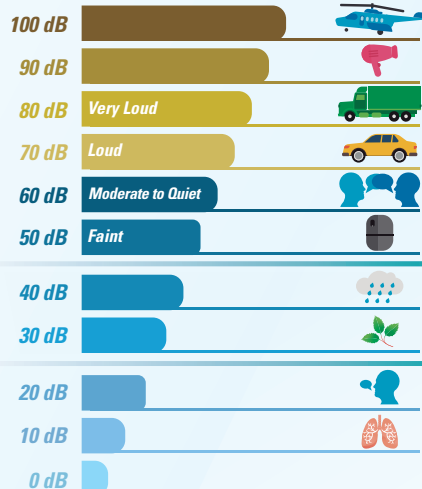
\*Please check with your local and federal rebate programs

\*\*10 year standard warranty. Additional 2 year extended warranty when product is registered and/or proof of installation



### ***Saves up to 30% on your utility bill***

Since mini-splits require no ducting, they forego those energy losses typically associated with conventional central systems. Ducts not properly sealed or unconditioned spaces such as attics, crawlspaces, or poorly insulated rooms can account for more than 30% of loss energy consumption, leading to a more expensive utility bill.



### ***Why go Inverter?***

The key difference between an inverter and non-inverter air conditioner is that an inverter system can regulate the speed of its compressor and motor. Once the room is cool, inverter technology reduces the speed of the motor and refrigerant used to cool the area, thus saving on energy.

In comparison, non-inverter motors only runs at full speed. The motor runs at full speed and turns off once room temperature drops to the desired level. This repeated on-off process can produce unnecessary noise and consume more energy.



### ***A Quiet Option***

With inverter technology, the indoor unit will continuously run at adjusted speeds, eliminating the loud start-up conventional air conditioning system require.

This comfort will allow a flexible installation in areas that will not interrupt day-to-day activities with unnecessary noise pollution.

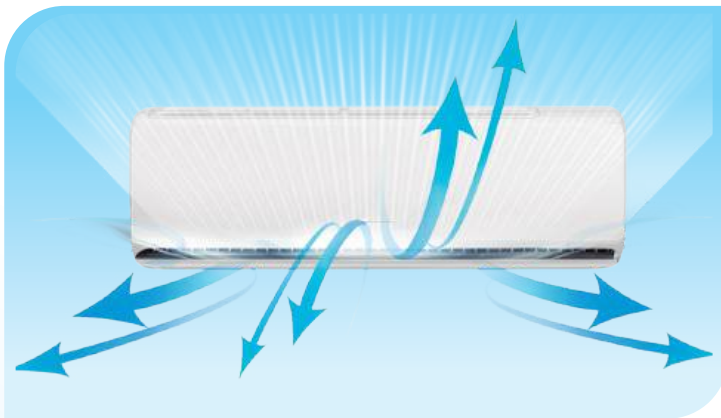
## Condenser Features

- Ultra heating capable of operating in outside temperature of  $-30^{\circ}\text{C}$  ( $-22^{\circ}\text{F}$ )
- Ultra high efficiency up to 27 SEER2 (38 SEER) cooling and 11 HSPF2 (15 HSPF) heating
- Advanced inverter compressor provides faster response to reaching comfort temperatures
- Low voltage startup helps operate system from 187V to 253, adapting to unstable power suppliers
- **Saving energy by using Intelligent Defrost. Helps monitor the frost build up on coil surface**
- Self-Diagnostic built-in computer which uses real-time diagnostics which helps prolong the unit's life and alerts users with simple error codes the system may be having.



## Wall Mount Features

- 4-Way airflow allows for Vertical and Horizontal auto swing
- Ultra-Quiet indoor operations with inverter technology
- Wide angle air guides enable a full  $180^{\circ}$  swing up and down for superior air distribution
- High efficiency grooved copper tubes



## Control Features

- Multi-functional wireless remote control with large LCD display
- "I FEEL" mode can sense the room temperature from the remote control, adjusting to your locations comfort
- Wifi Access to control your system away from your system's location. Compatible with Amazon Alexa and Google Home.
- Sleep Mode allows the unit to automatically adjust room's temperature at low sound levels
- Available displays in  $^{\circ}\text{F}$  or  $^{\circ}\text{C}$





- Ultra Heat Technology
- Two-Stage Variable Speed
- Compressor Quiet Operation
- Low Voltage Startup

- Multiple fan speed
- Adjustable LED display
- Precise Airflow Control
- Eco-Friendly R410a Refrigerant



INDOOR UNIT



OUTDOOR UNIT

Product # <sup>1</sup>	Indoor Unit		GWH09QD-D3DNE6B/I GWH09ACD-D3DNA1A/O	GWH12QD-D3DNE6A/I GWH12YD-D3DNA1A/O	GWH18QE-D3DND6A/I GWH18YE-D3DNA1A/O	GWH24QE-D3DND6L/I GWH24YE-D3DNA1A/O
	Outdoor Unit					
Technical Performance						
Voltage		Volts	230/208	230/208	230/208	230/208
Cooling capacity	Nominal	W (BTU/hr)	2638 (9000)	3517 (12000)	5276 (18000)	6450 (22000)
	Min. – max.	W (BTU/hr)	450 - 3800 (1535 - 12966)	850 - 4500 (2900 - 15354)	1200 - 6400 (4094 - 21837)	2000 - 9000 (6800 - 30700)
Heating capacity	Nominal	W (BTU/hr)	2638 (9000)	3575 (12200)	5276 (18000)	7000 (24000)
	Min. – max.	W (BTU/hr)	700 - 4000 (2388 - 13648)	900 - 5500 (3071 - 18766)	1200 - 7200 (4094 - 24566)	2000 - 9500 (6800 - 32000)
Used cooling power input	Nominal	W	540	785	1330	1700
	Min. – max.	W	50 - 1400	75 - 1500	350 - 2500	450 - 3700
Used heating power input	Nominal	W	590	940	1500	2000
	Min. – max.	W	200-1500	250 - 1600	350 - 2500	380 - 3700
Used rated input		W	1500	1600	2500	3700
Rated current		A	6.2	6.5	10.8	16.4
MCA		A	9	9	22	22
Max. over-current protection (MOCP)		A	15	15	30	35
SEER2 (SEER)		-	27 (38)	24 (30.5)	22 (24.5)	21.5 (21.5)
HSPF2 (HSPF)		-	11 (15)	8.5 (14)	10 (12)	9.5 (12)
EER2		W/W	16.6	14	13.5	13
COP		W/W	4.47	3.8	3.52	3.5
AHRI number		-	202360989	9116197	9102074	9102794
ENERGY STAR		-	✓	✓	✓	✓
Indoor Unit						
Dehumidification		pt/hr (l/hr)	1.69 (0.80)	2.96 (1.40)	3.80 (1.80)	5.20 (2.50)
Air flow volume		cfm	424 / 383 / 353 / 324 / 294 / 265 / 206	500 / 471 / 441 / 353 / 324 / 265 / 235	736 / 677 / 618 / 559 / 500 / 457 / 353	824 / 765 / 706 / 647 / 589 / 500 / 383
Sound level		dB (A)	43 / 40 / 38 / 36 / 33 / 31 / 19	49 / 46 / 43 / 40 / 37 / 34 / 22	51 / 48 / 45 / 42 / 39 / 36 / 34	52 / 49 / 46 / 43 / 40 / 37 / 34
Fan motor power output		W	60	60	60	70
Fan motor RLA		A	0.09	0.09	0.24	0.38
Deflector stepper motor power output		W	2.5 / 1.5	2.5 / 1.5	2.5 / 1.5	2.5
Net weight		lb (kg)	29.8 (13.5)	29.8 (13.5)	36.4 (16.5)	36.4 (16.5)
Outdoor Unit						
Air flow volume		m³/hr	2400	2400	2354	4000
Sound level		dB (A)	53	53	59	59
Compressor power input		W	1070	1070	2443	2443
Compressor LRA		A	35	35	30	30
Compressor RLA		A	6.9	6.9	15.5	16
Fan motor power output		W	30	30	90	90
Fan motor RLA		A	0.24	0.24	0.65	0.65
Refrigerant volume (R410A)		oz (g)	55.4 (1559)	49.4 (1400)	70.6 (2101)	81.1 (2299)
Net weight		lb (kg)	99.2 (45)	99.2 (45)	141.1 (64)	147.7 (67)
Operating ambient temperature	Cooling	°C (°F)	-18 to 54 (0 to 129)			
	Heating	°C (°F)	-30 to 24 (-22 to 75)			
Connection Piping/Refrigerant						
Pre-charge length		ft. (m)	25 (7.5)	25 (7.5)	25 (7.5)	25 (7.5)
Additional refrigerant charge		oz/ft. (g/m)	0.2 (20)	0.2 (20)	0.5 (50)	0.5 (50)
Liquid pipe outer diameter		in.	1/4	1/4	1/4	1/4
Gas pipe outer diameter		in.	1/2	1/2	5/8	5/8
Maximum height difference		ft. (m)	49 (15)	49 (15)	66 (20)	98 (30)
Maximum total length		ft. (m)	98 (30)	98 (30)	100 (30)	164 (50)

<sup>1</sup> 1 indoor unit and 1 outdoor unit. Note that each unit is individually packaged.

Gree products are subject to continuous improvements. Dettson reserves the right to modify product design, specifications and information without notice and without incurring obligations.

Distributed by:

**THERM LUX**  
CLIMATISATION ET CHAUFFAGE

By **Dettson**